

15

JULIUS MELCHERS (1829–1908)

*Antoine de la Mothe Cadillac, Rene Robert Sieur de LaSalle
Pere Jacques Marquette, Father Gabriel Richard, c. 1885, Carved sandstone*
Gift of Detroit Common Council



Originally gracing the facade of the 1871 Detroit City Hall, when the building was demolished in 1960 the sculptures were saved and in 1973 placed in their present site. Julius Melchers immigrated from Germany to Detroit in 1855. For nearly 40 years Melchers created architectural sculptures and carvings in and around the city.

16

BERTEL THORWALDSEN (after) (1770–1845)

Johannes Gutenberg, 1885, Cast zinc
Gift of Mr. & Mrs. Kurt Kaydel

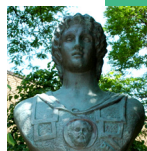


This 1885 spelter copy of the original bronze honoring the creator of the first moveable type, was installed at the Detroit Abend Post building until the building was demolished in the 1920's. Bertel Thorwaldsen, worked with his father as a wood carver and at age eleven entered Copenhagen School of Art. He lived in Italy for 23 years producing numerous works including his famous Lion of Lucerne.

17

CHRISTOS PAPADIMAS

Alexander the Great, 2001, Cast bronze
Gift of the Pan-Macedonian Association of Michigan



The classical style of this heroic bust and its placement near the buildings where language courses are taught and where the ethnic heritage rooms are located offers an important visual reminder of the cultural legacy of Greece. Christos Papadimas creates sculptures honoring the rich history of the Hellenistic Age.

18

JOHN NICK PAPPAS b. 1934

Joseph Warren, M.D., 1976, Cast bronze
Gift of the WSU Bicentennial Commission



This moving sculpture commemorates General Joseph Warren, M.D., who served as a voluntary private soldier and chief executive in the Revolutionary War and died at Bunker Hill in 1775. John Nick Pappas received both his BFA and MA degrees from WSU. Pappas taught art at Eastern Michigan University for 40 years. In 1977 he completed The Procession, a monumental figurative sculpture commissioned for Michigan's Blue Cross and Blue Shield headquarters.

19

EDWARD SYKES b. 1971

Untitled, 2001, Steel
Commission in memory of Professor Andrzej W. Olbrot

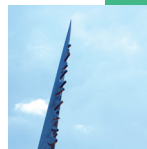


This abstract sculpture was commissioned by colleagues of Professor Andrzej W. Olbrot, a distinguished faculty member of the Department of Electrical and Computer Engineering at WSU who died tragically in 1998. Former Detroit artist, Edward Sykes, created the sculpture to represent two systems – art and engineering. Sykes states 'The whole sculpture is a link, linking time, events, lives and relationships.'

20

BRUCE WHITE b. 1933

Helios Trail, 1989, Welded aluminum
Gift of the Friends of the College of Engineering



In 1988 the College of Engineering sought a sculpture which would 'speak to the dynamic energy of the College and the efforts of students and faculty to reach for new horizons in technology and knowledge.' Today, Bruce White's design for this soaring sculpture serves as an icon of the College. White holds a doctorate from Columbia University and has taught at several institutions.

A great university always strives to challenge the imagination. Wayne State University believes that a significant way of accomplishing this is by providing provocative and stimulating surroundings for students, faculty, staff and visitors. The WSU Art Collection, which has grown to include over 6000 works of art, has proved a primary resource for creating such an environment.

The university's enduring philosophy is that pieces in the WSU Art Collection appear throughout the campus — in signature buildings and on the university's malls and lawns. This tradition of art in public places is most prominently upheld by the number, variety and excellence of outdoor sculptures across Wayne State's grounds. These works embrace and enhance the everyday lives of people on campus and in the surrounding communities and reinforce Wayne State University's and Detroit's standing as a center for artistic expression.

Inquiries regarding works in the Wayne State University Art Collection or possible donations may be directed to:

Art Collection Coordinator
College of Fine, Performing and Communication Arts
5104 Gullen Mall, Linsell House
Wayne State University, Detroit, MI 48202

References

100 Select Works from the Wayne State University Art Collection,
Wayne State University Press, 2003

Art in Detroit Public Places (3rd edition) by Dennis Alan Nawrocki,
Wayne State University Press, 2008

Selections from the Wayne State University Art Collection,
Wayne State University Press, 1992

Parking

For current, detailed parking information (meters, fees, lot and structure locations) visit parking.wayne.edu or call (313) 576-PARK.

ArtWalk was supported by:



WAYNE STATE UNIVERSITY
COLLEGE OF FINE, PERFORMING
AND COMMUNICATION ARTS

ArtWalk

7

**SASSON SOFFER** (1929-2009)

Midmien, 1970, Welded stainless steel
Gift of Lila and Gilbert Silverman

Like the frozen motion of lights looping through space, *Midmien* illuminates this spot on the grassy lawn bordering the Community Arts Auditorium and provides a visual link between the art and music disciplines. Sassan Soffer, an Iraqi-born New York artist, is known for his large-scale, sleek geometric constructions.

8

**MORRIS BROSE** (1914–2000)

Sentinel II, 1969, Cast bronze
Gift of Mr. & Mrs. Samuel Linden

Sentinel II is a slender sculpture which echoed the human form, a theme Morris Brose began in 1968. The title, though suggestive of a military figure, was chosen to represent an entity which emotes a 'safe and comforting presence.' Brose was born in Poland and immigrated to the US in 1931.

9

**OSKAR STONOROV** (1905–1970)

Dancing Maidens, c. 1960, Cast bronze
Bequest of Walter and May Reuther

Oskar Stonorov created this work, which originally stood on the banks of a stream on the Reuther estate, for his good friend, May Reuther, who was an active supporter of Dance. Stonorov was a modernist architect, architectural writer, historian and archivist who immigrated to the United States from Germany in 1929.

10

**ROBERT SCHEFMAN** b. 1952

In Lieu, 1975, Welded corten steel
Gift of Mr. & Mrs. Leslie R. Schmier and Mr. & Mrs. Melvin Maxwell Smith
In honor of Jane Betsy Welling

This massive sculpture takes its title from the word 'lieu' or 'place' and signifies a physical reality. No element is square with any other, providing a sense of motion even to this firmly grounded work. Robert Schefman was born in Detroit, lived and worked in New York City for thirteen years and returned to the Detroit area in 1989.

11

**G. ALDEN SMITH** (1912–1993)

Wings of Learning, 1962, Welded brass and steel
Gift of the Class of 1962

This sculpture represents the artist's visual concept of the learning process, with intertwining limbs bursting into an open upward movement. G. Alden Smith served as the Head of the Art and Art History Department at WSU from 1962 – 1978 and was pivotal in developing the sculpture department where he mentored such students as David Barr, Sergio De Giusti, Jim Pallas and others.

13

**TOM PAUL FITZGERALD** b. 1941

Slip Fault, 1976, Aged and welded steel
Gift of the artist, 2014

Sculptor Tom Paul Fitzgerald received his MFA from Cranbrook Academy of Fine Art in 1967 and shortly after began his 42 year tenure at WSU, teaching sculpture in the Department of Art and Art History. *Slip Fault*, Fitzgerald states, is an "abstract exploration of dream images (in silhouette) of western mountainscapes."

WAYNE STATE UNIVERSITY



SEFF WEIDL (1915–1972)
The Philosopher, 1974, Bronze
Gift of Samuel I. and Maria Shuman

This attenuated figure looks down on the passersby from its location on the southwest wall of the old Law School Building. Seff Weidl lived in Germany and studied at the Academy of Fine Arts in Munich. Though his subjects were based on classical motifs, his central subject was always man.



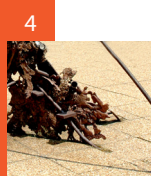
ROBERT MURRAY b. 1936
Nordkyn, 1974, Painted corten steel
Gift of W. Hawkins Ferry

Nordkyn refers to an island in Lake Huron. The gently floating, folded, blue painted steel recalls the landscape of a distant island. Robert Murray is one of the most significant Canadian sculptors of his generation. He is internationally recognized for his twisted metal works which connote both lightness and substantiality.



GIACOMO MANZU (1908–1991)
The Nymph and the Faun, 1968, Cast bronze
Gift of the McGregor Fund

Giacomo Manzu was selected by Minoru Yamasaki, the architect for the McGregor Memorial Conference Center, to provide a work for this Japanese-inspired sculpture court. Manzu's figure of the curious faun spying on a languorous nymph is both provocative and disarming. Manzu is an important Italian sculptor of the 20th century and created the Portal of Death door at St. Peter's Basilica in Vatican City.



MICHAEL TODD b. 1935
Ikebana II, 1976, Welded steel
Gift of the McGregor Fund

This sculpture, like all works from Michael Todd's Ikebana series, is infused with Asian symbols. The blend of organic and geometric shapes reflects his interest in metaphysics. Todd is a prominent California sculptor who received his BFA from Notre Dame in 1957 and an MA from UCLA in 1959.



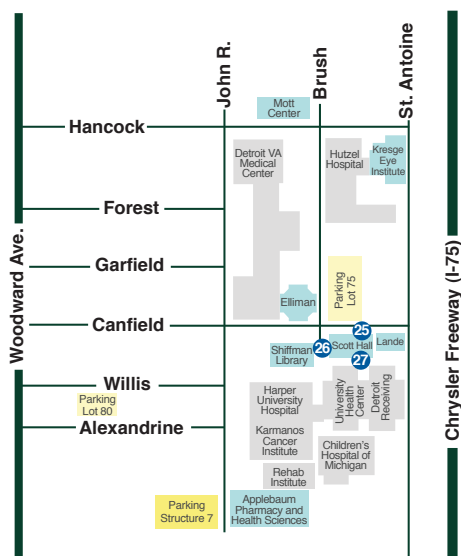
GEORG KOLBE (1877–1947)
Assunta, 1976, Cast bronze (of 1921 original)
Gift of the McGregor Fund

This tranquil bronze figure overlooks the McGregor sculpture court which offers a quiet, reflective spot in the heart of Wayne's busy urban campus. Georg Kolbe, known as Germany's Rodin, was the leading German figure sculptor of his generation, developing a vigorous, modern and classical style.



SERGIO DE GIUSTI b. 1941
General Anthony Wayne, 1968, Cast bronze
Gift of the Alumni Association

Commissioned to mark the centennial of WSU in 1868, this four-foot bronze medallion portrays General Anthony Wayne whose military exploits in the American Revolution earned him the moniker 'Mad Anthony.' Born in Italy, Sergio De Giusti arrived in Detroit in 1954. He received both his BFA and MFA degrees from WSU.



Medical Campus



BILL RODWELL
Winter Bronze, 1965, Cast bronze, Gift of the Medical School Class of 1967

The line between life and death is the subject of this expressive sculpture and its placement at the WSU medical campus further emphasizes its content. Bill Rodwell attended the Society of Arts and Crafts (now College for Creative Studies). He lived and worked in Italy from 1967-71 and currently resides in New Mexico.



SOREL ETROG (1933-2014)
Family Group, 1966, Cast bronze, Gift of Dr. & Mrs. Harry Y. Hoffman

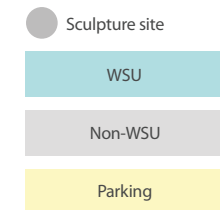
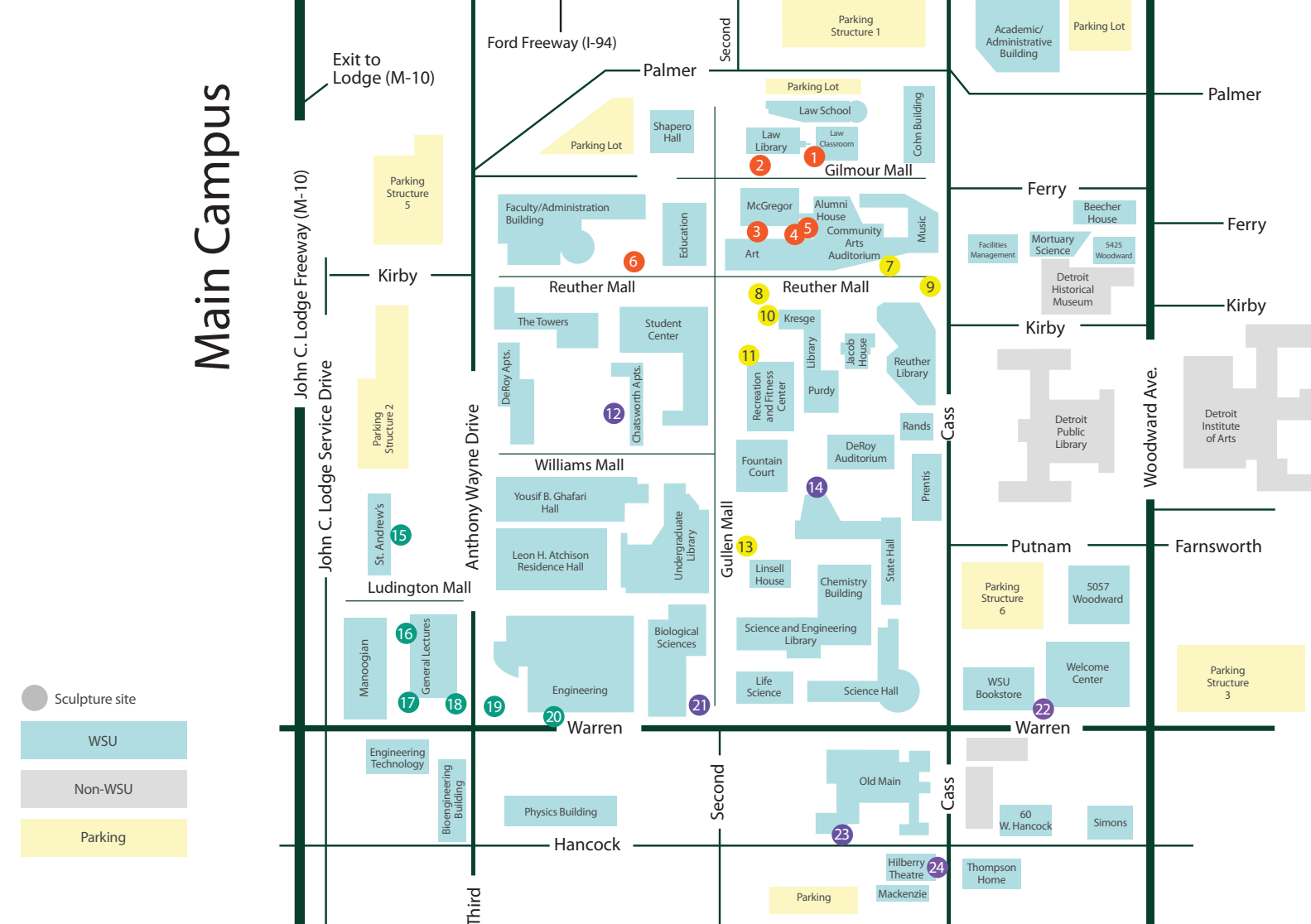
Family Group is one of Sorel Etrog's major works. It describes the support of family but also alludes to the complexities of this most integral of human relationships. Born in Romania, Etrog was trained in Tel Aviv and immigrated to New York in 1959. In 1963 he became a Canadian citizen and in 1995 was made a member of the Order of Canada.



KOSTAS N. GEORGAKAS
Hippocrates, 1971, Carved marble, Gift of the Nicholas W. Genematas Foundation

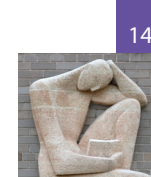
Standing imperiously at the entrance of the Gordon Scott Hall of Basic Medical Science, this classical sculpture reminds students of the Hippocratic Oath taken by all physicians as they accept their role as healers. Kostas N. Georgakas carves pure white marble sculptures which are reminiscent of the sculptures of classical Greece.

Main Campus



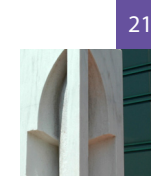
ALICE SMITH b. 1958
Iktomi, 2006, Stainless steel and glass
WSU Commission

Named after a clever spirit in West African folklore, *Iktomi* honors Dr. William R. Keast, WSU president from 1965–1971, who served during the turbulence of the 1967 riots and the Vietnam War. Throughout this period he continued to further WSU's standing as a leading urban university. Born in Birmingham, Alabama, Alice Smith came to Detroit to study glass at CCS and received her MFA from WSU in 2005.



G. ALDEN SMITH (1912–1993)
Student, 1948, Carved limestone relief
WSU Commission

Student is an allegorical figure representing youth and learning. G. Alden Smith carved smooth, rounded shapes into the porous stone, developing the figure as a series of forms linked into a complex whole. Smith taught at WSU from 1940–1983. He fostered Detroit's Cass Corridor art movement of the 1960's and 70's and founded Common Ground, an inexpensive cooperative studio for young Detroit artists.



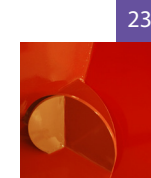
JAYSON D. LOWERY b. 1976
Continuity, 2004, Marble and steel
Gift of the Alumni Association

Continuity, which utilizes the distinct qualities of marble and steel, honors the commitment of Thomas N. Bonner, WSU's President from 1978 – 1982. Bonner was responsible for forging exchange agreements with many international universities. Jayson D. Lowry, whose sculptural forms are often pared down to their most essential qualities, is a graduate of the MFA program at WSU.



TYREE GUYTON b. 1955
Invisible Doors, 2007, Painted steel
Commission supported by The Joyce Foundation, Purchased through donations to WSU

Tyree Guyton said of *Invisible Doors*, 'it is designed with the hope of helping people to open the mental doors of our minds – doors that often block us from seeing new possibilities for all people.' In 1986, Detroit native, Guyton began The Heidelberg Project, a transformative art installation in his struggling Detroit neighborhood, which has received both local controversy and international acclaim.



DAVID BARR b. 1939
Winter Flower, 1987, Painted steel
Gift of Mr. & Mrs. Edward J. Tutag

David Barr creates sculptures which are in harmony with 'natural continuum systems.' In *Winter Flower* the negative becomes positive and color transforms. Barr is a constructivist sculptor, an architectural designer and a creator of site specific public sculpture. He received both his BFA (1962) and MFA (1965) from WSU.



ROBERT SESTOK b. 1946
Free Form 5, 2001, Welded Steel
Gift of Charles Sestok III

In Robert Sestok's sculpture, *Free Form 5*, various shapes of roughly-cut steel are welded together, intersecting at diverse angles, reaching upward like a bushy, spirited post-industrial totem. A life-long Detroit and influential Cass Corridor artist, Sestok studied at the Detroit Society of Arts and Crafts (now the College for Creative Studies) from 1965-1969 and at Cranbrook Academy of Art in 1970.